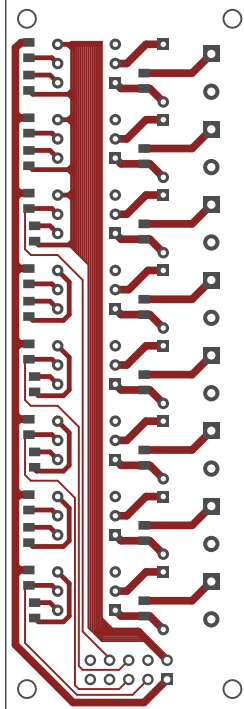
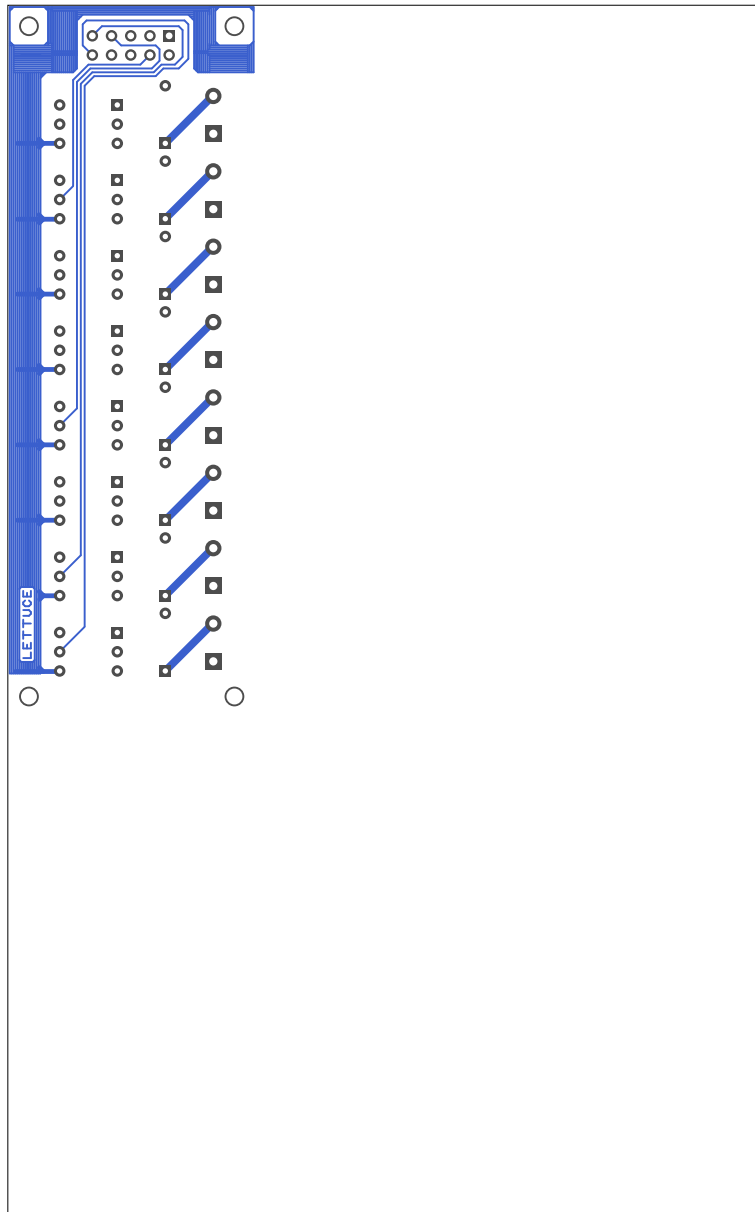
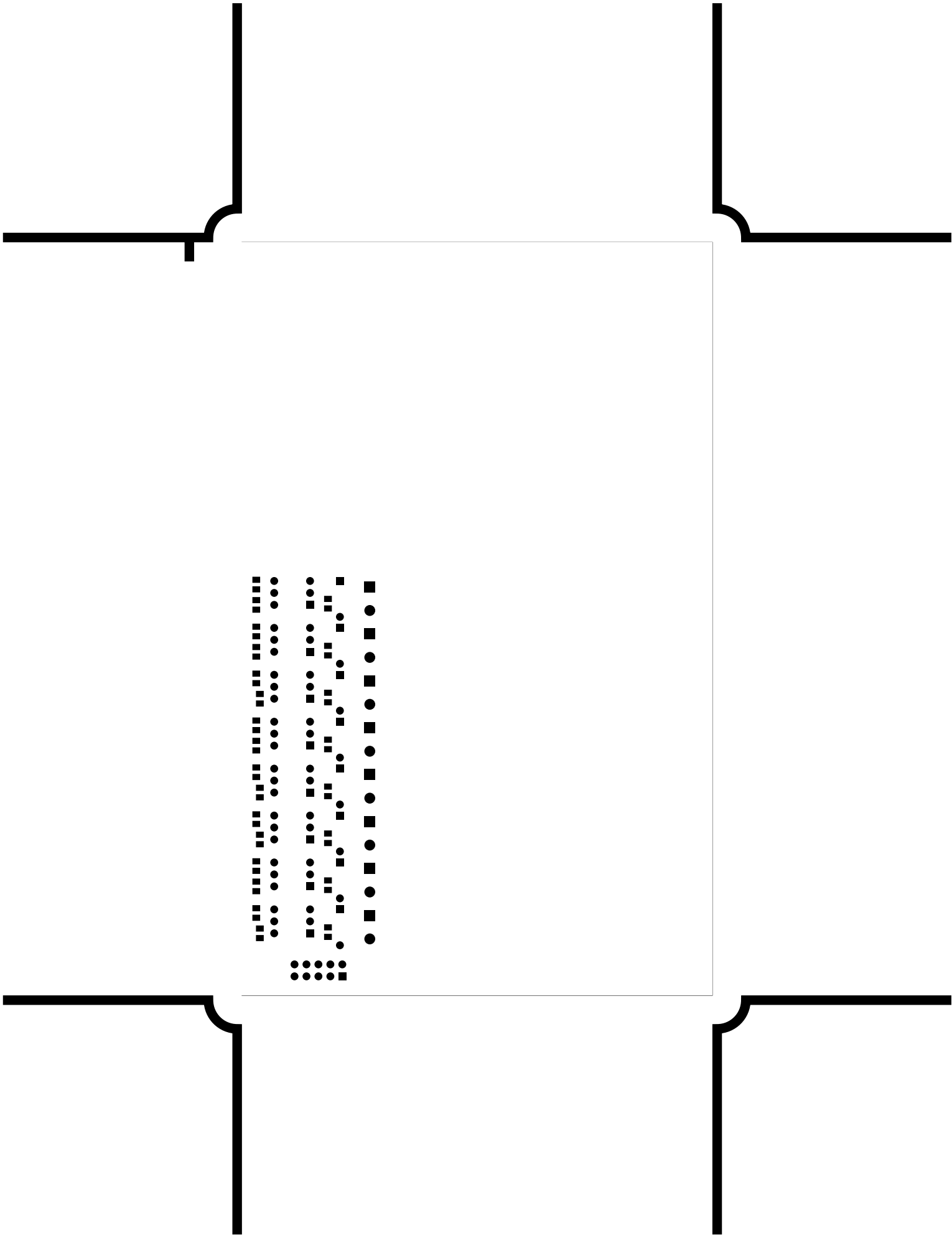
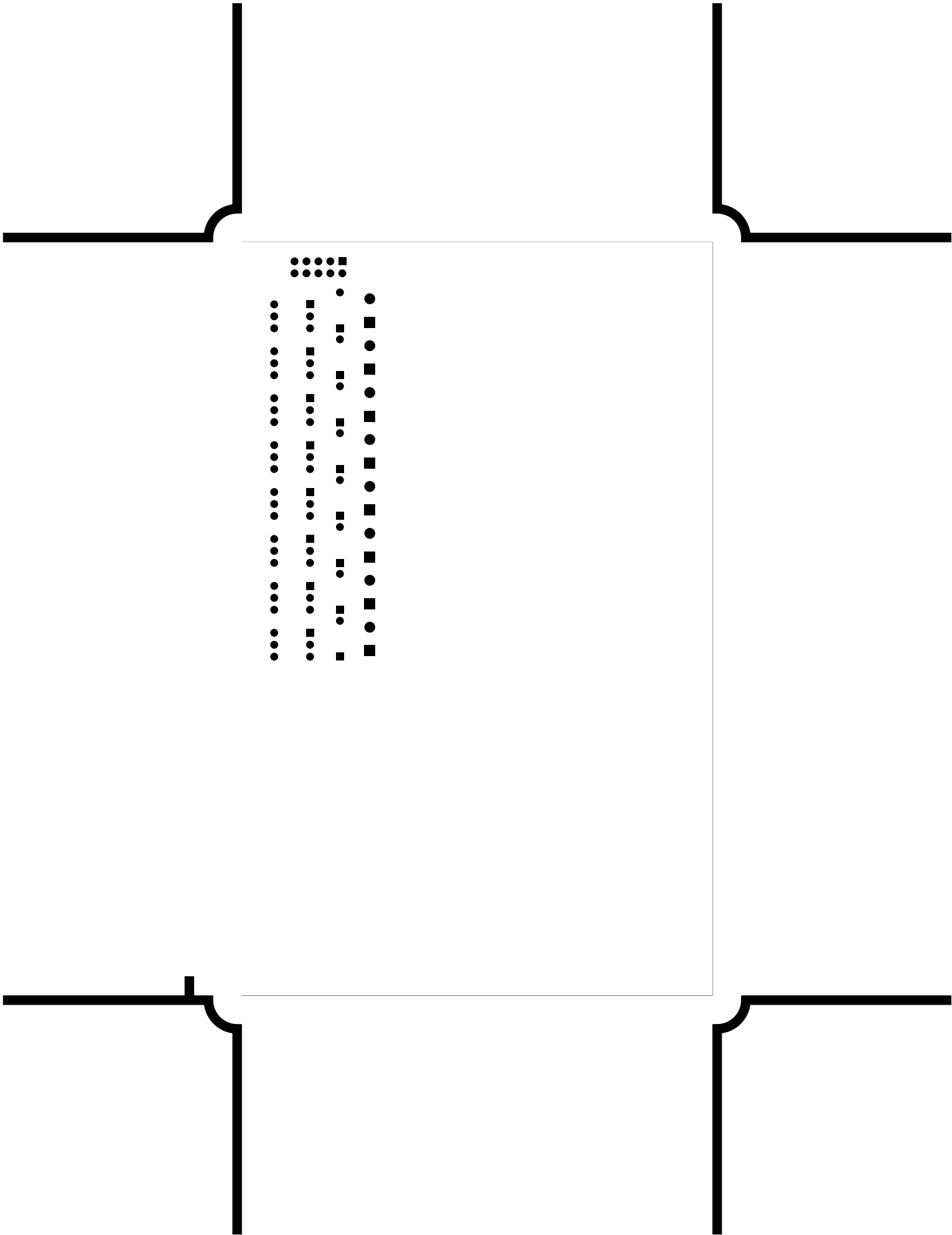


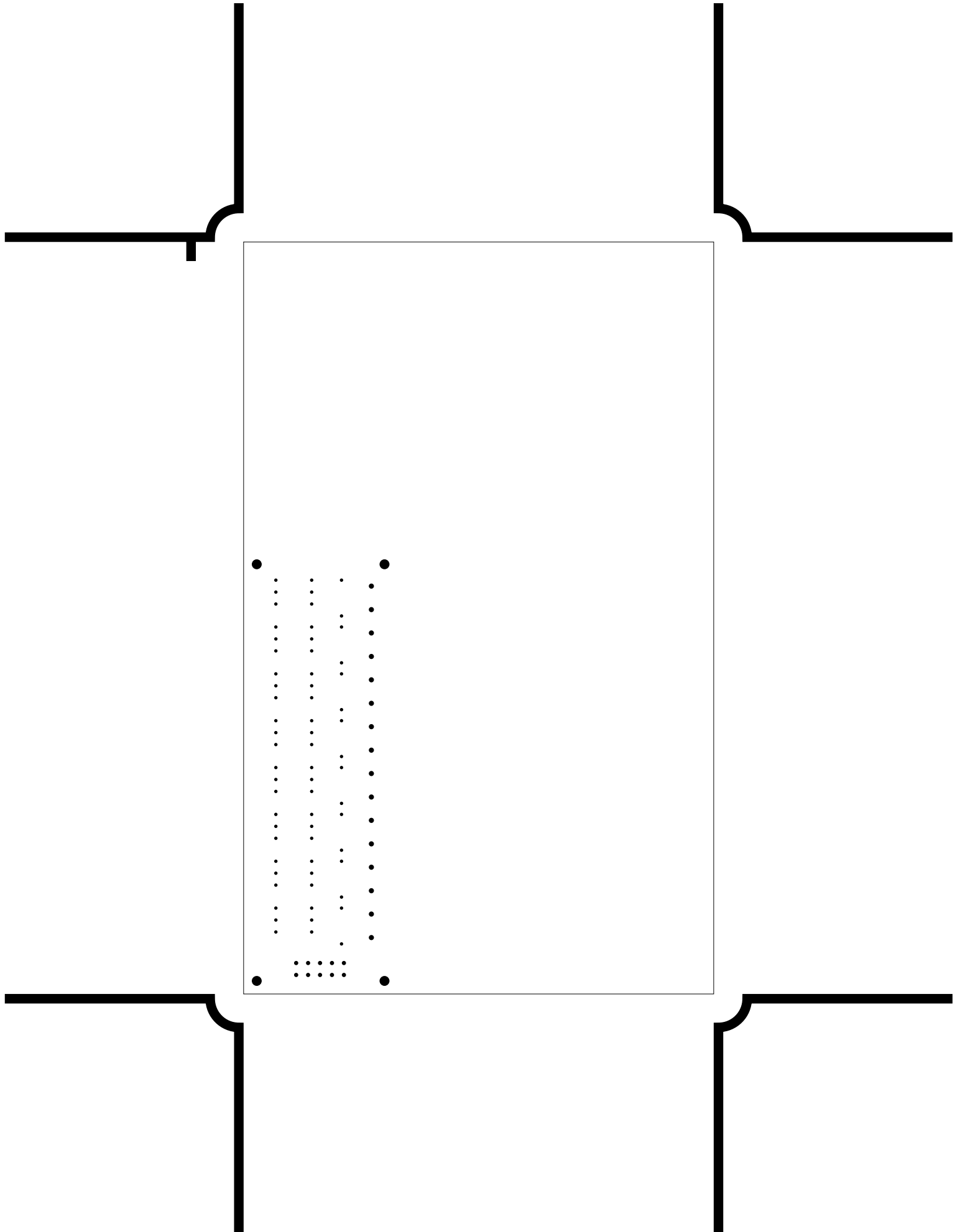
2. component
3. solder
4. componentmask
5. soldermask
6. plated-drill
7. topsilk
8. bottomsilk
9. toppaste
10. topassembly
11. bottomassembly
12. fab

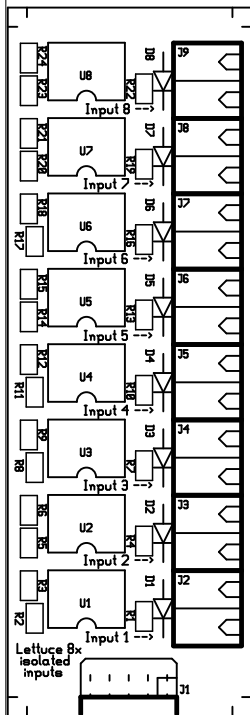


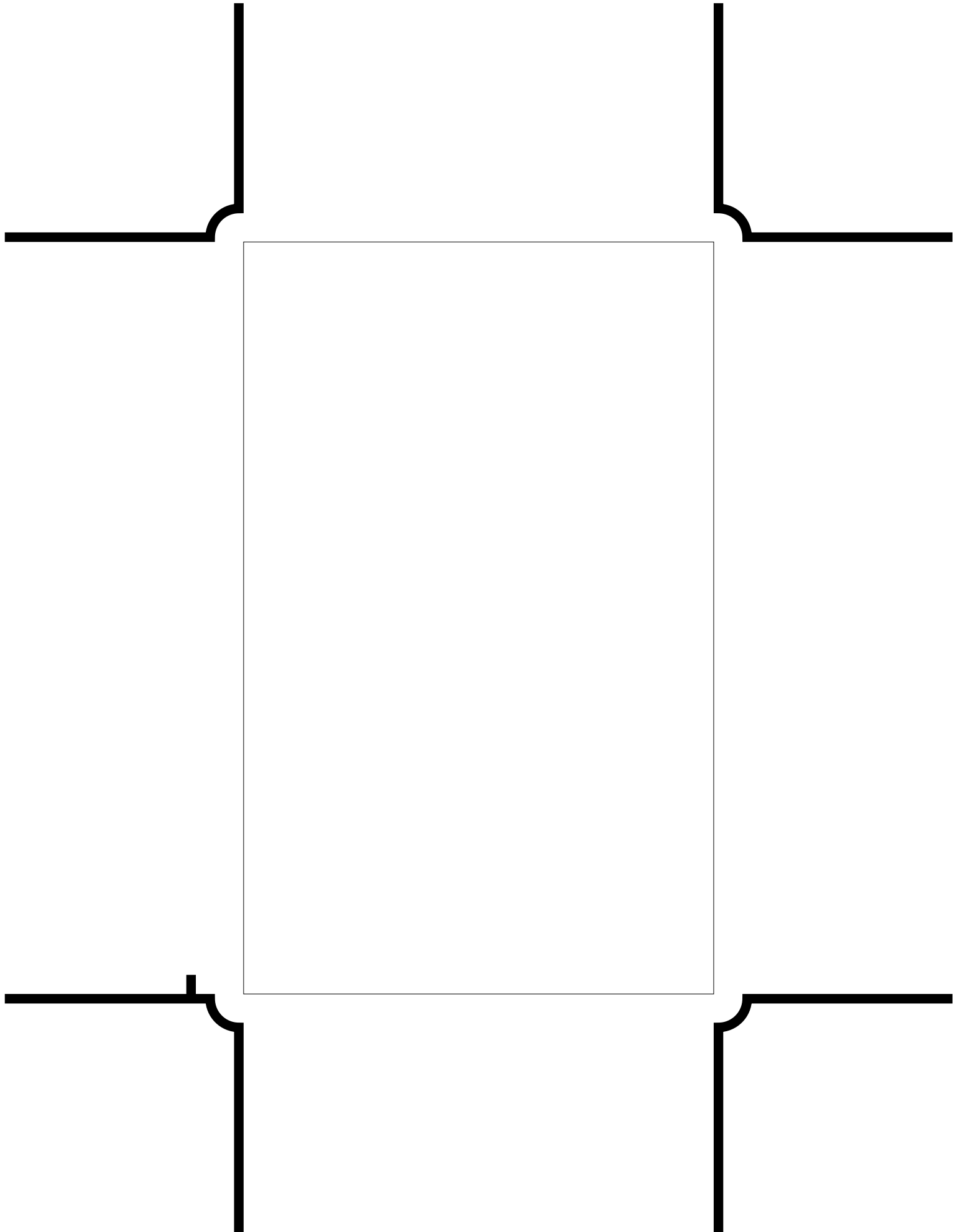


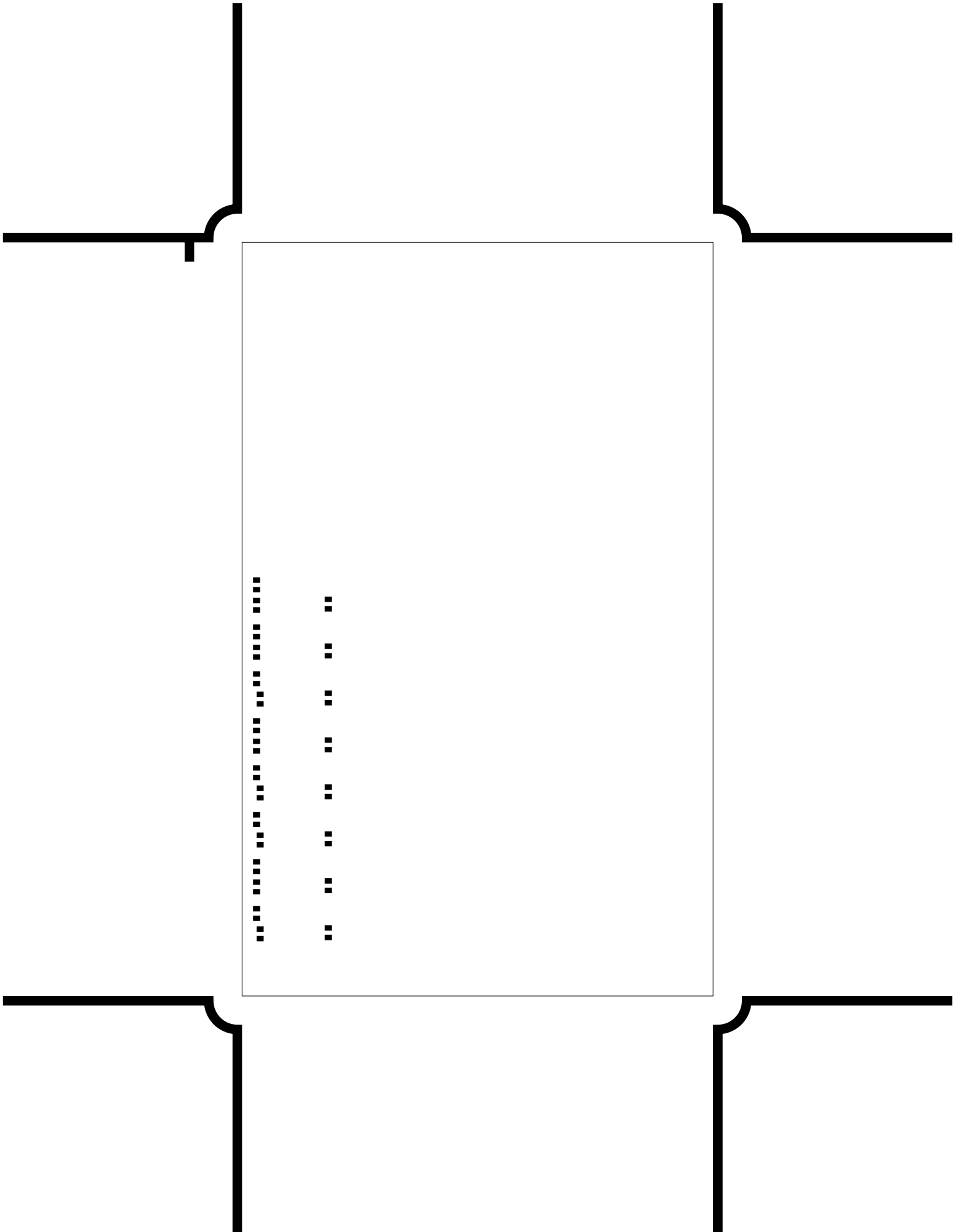


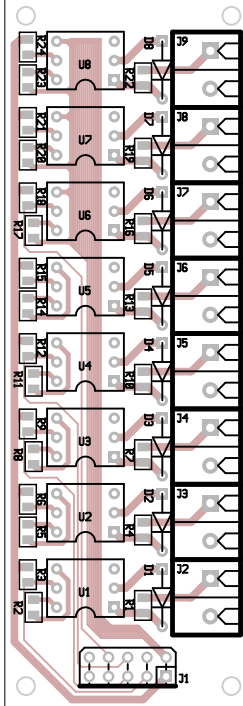


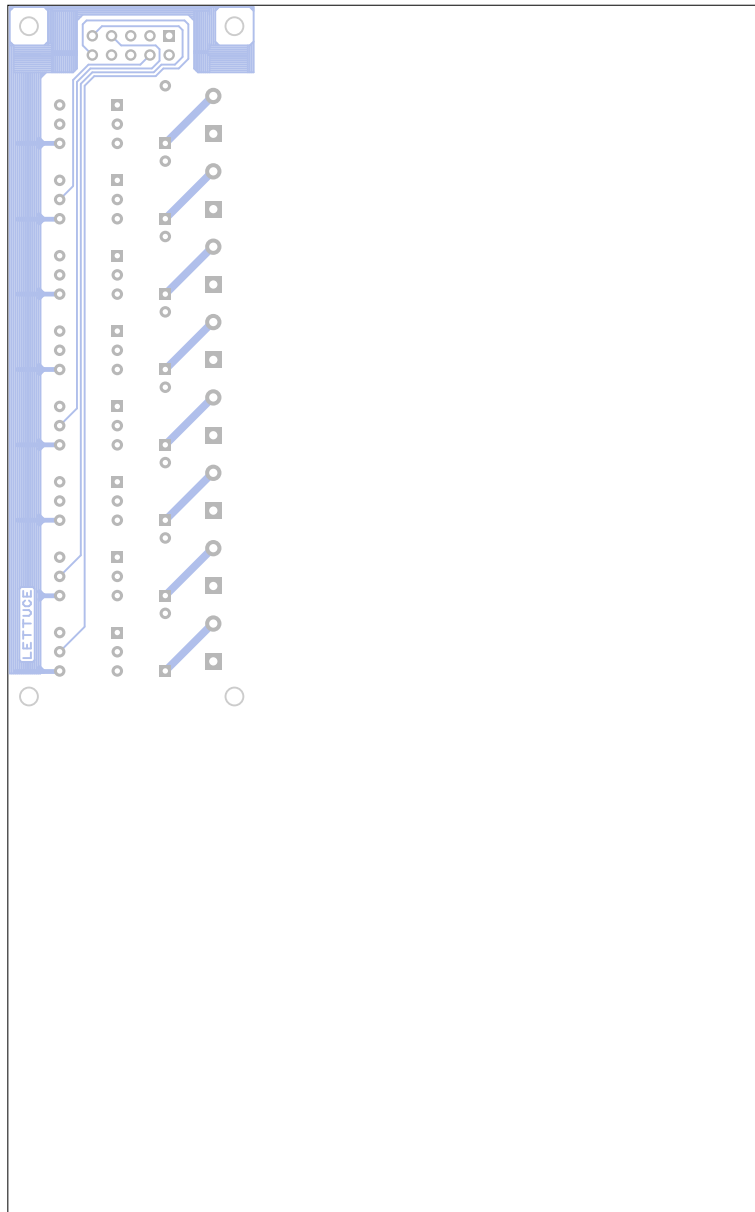












There are 4 different drill sizes used in this layout, 94 holes total

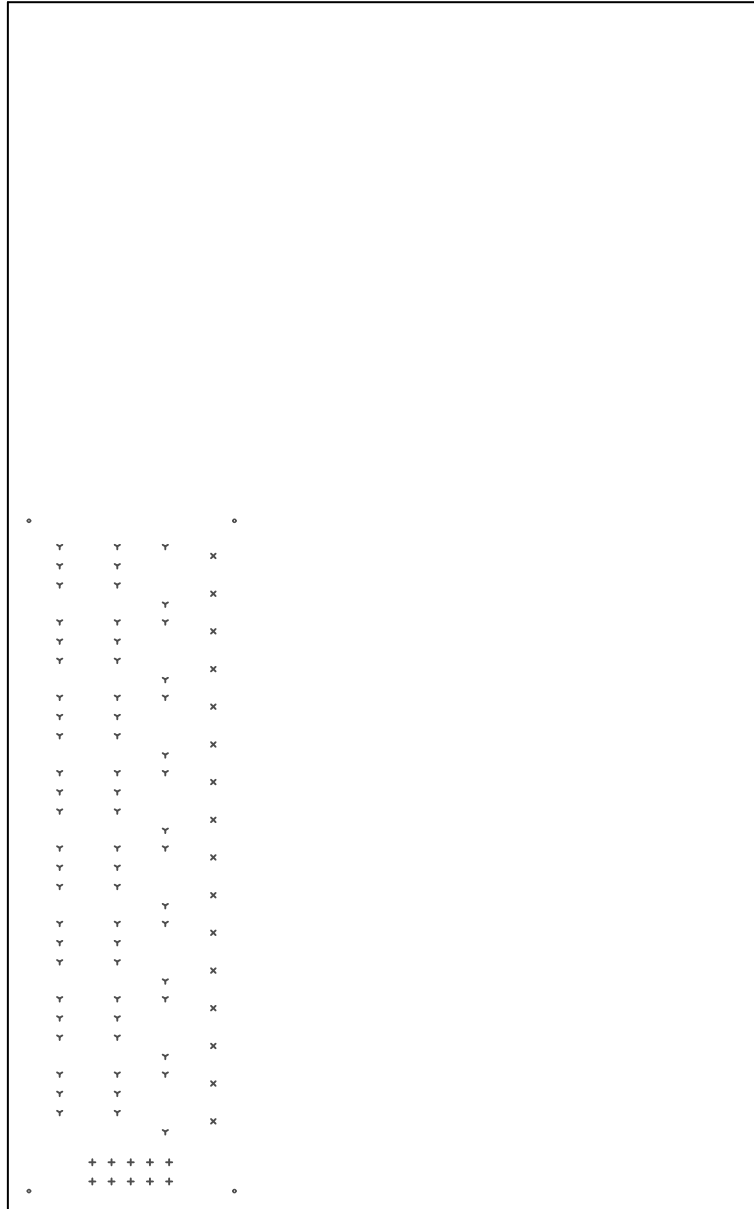
Symbol	Diam. (Inch)	Count	Plated?
Y	<u>0.028</u>	<u>64</u>	<u>YES</u>
+	<u>0.035</u>	<u>10</u>	<u>YES</u>
x	<u>0.043</u>	<u>16</u>	<u>YES</u>
o	<u>0.083</u>	<u>4</u>	<u>YES</u>

Title: (unknown) - Fabrication Drawing

Author: Andrew Wedgbury

Date: Mon Apr 21 12:09:14 2008 UTC

Maximum Dimensions: 3937 mils wide, 6299 mils high



Board outline is the centerline of this 10 mil rectangle - 0,0 to 3937,6299 mils