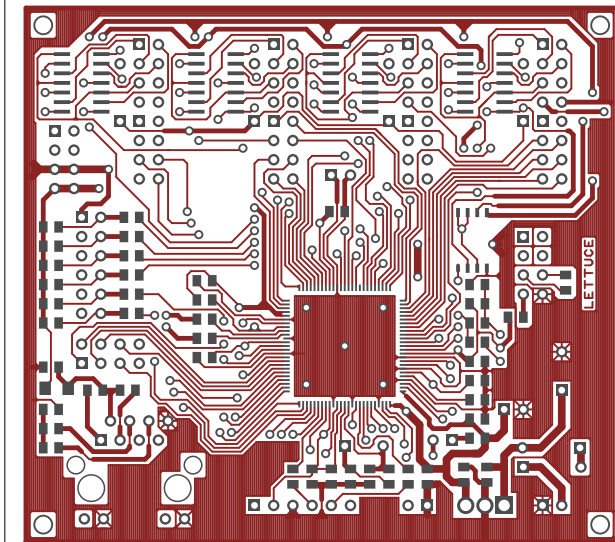
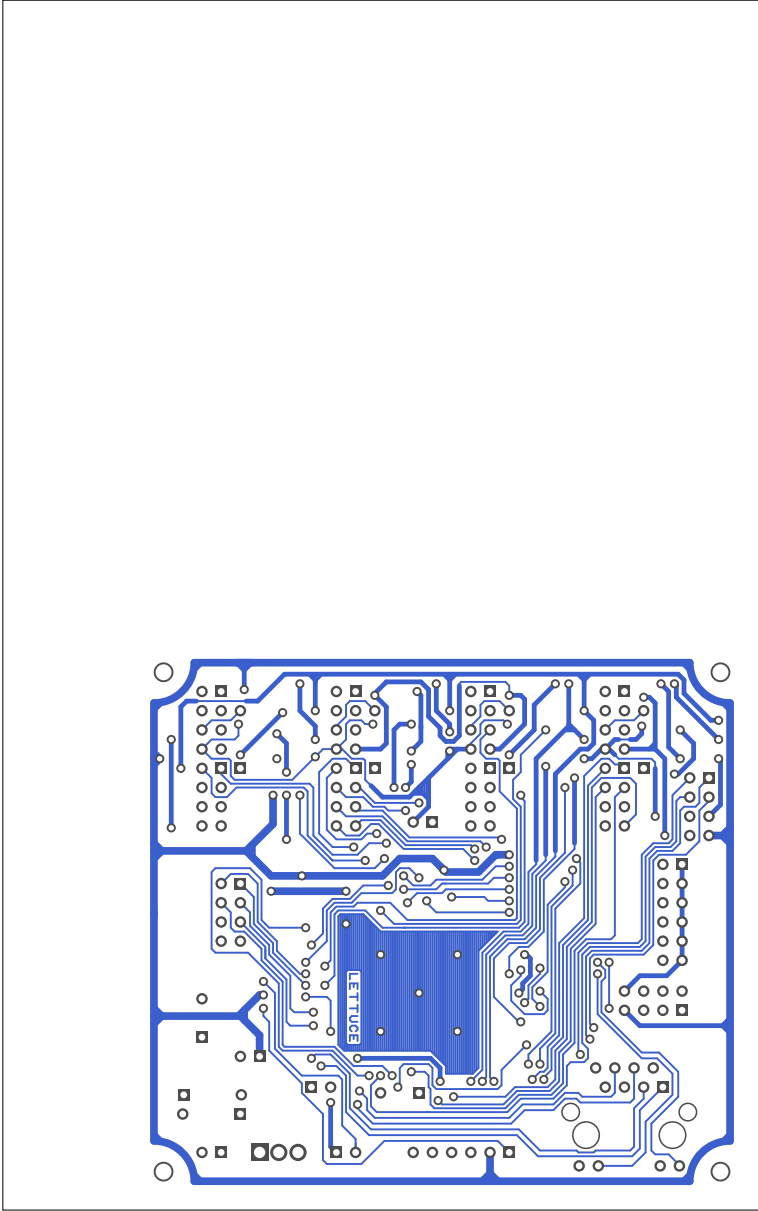
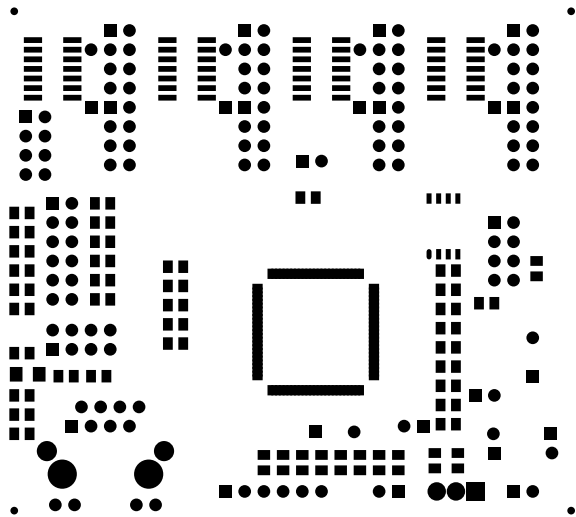
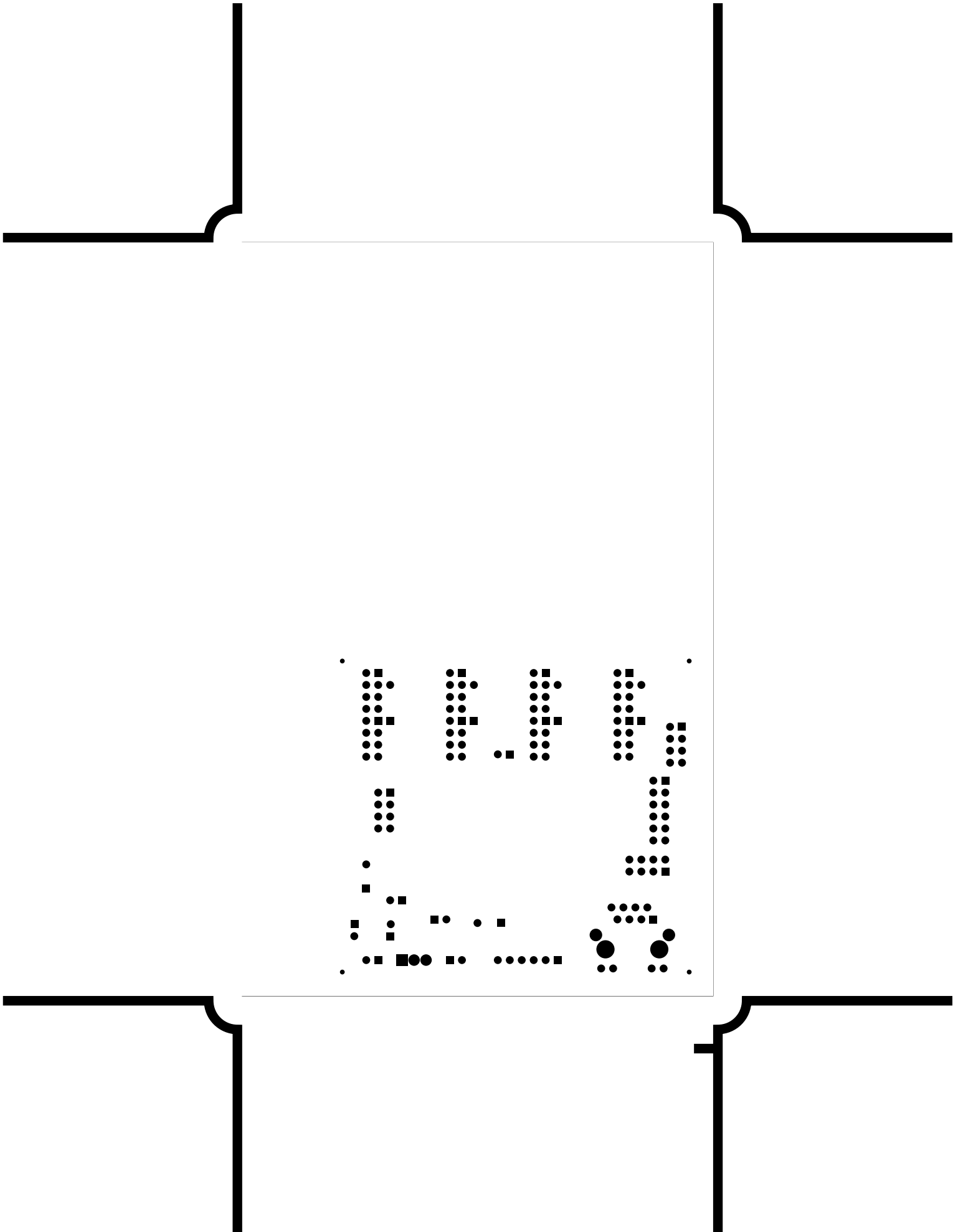


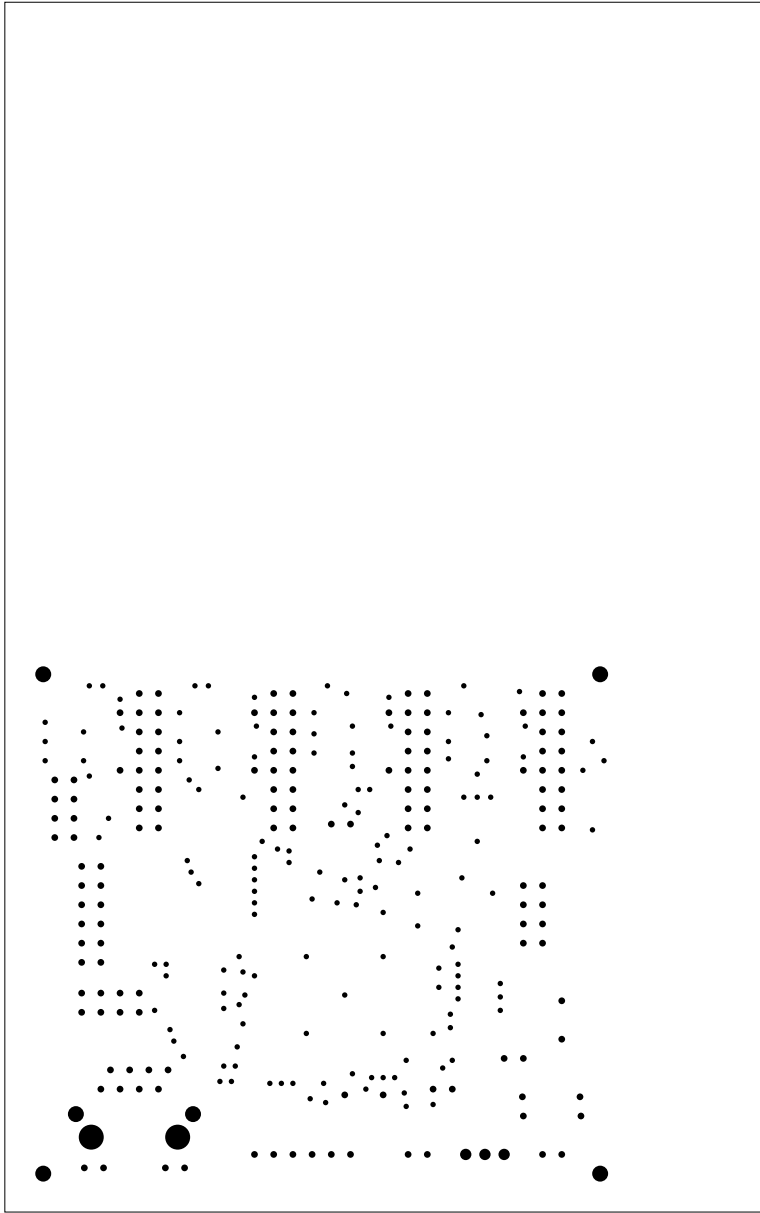
2. component
3. solder
4. componentmask
5. soldermask
6. plated-drill
7. topsilk
8. bottomsilk
9. toppaste
10. topassembly
11. bottomassembly
12. fab

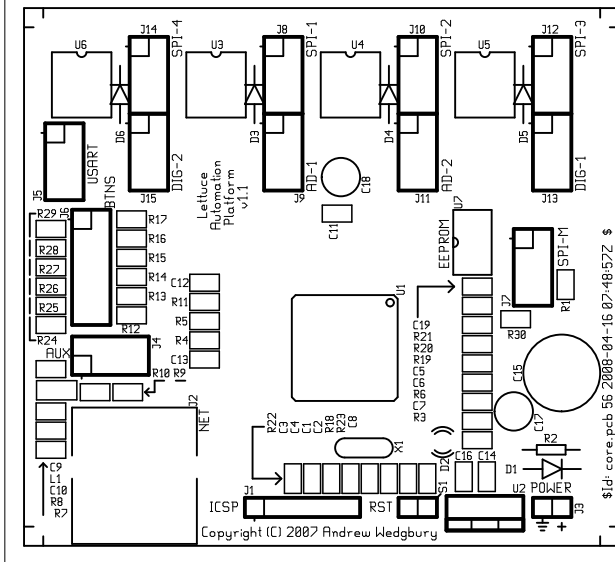


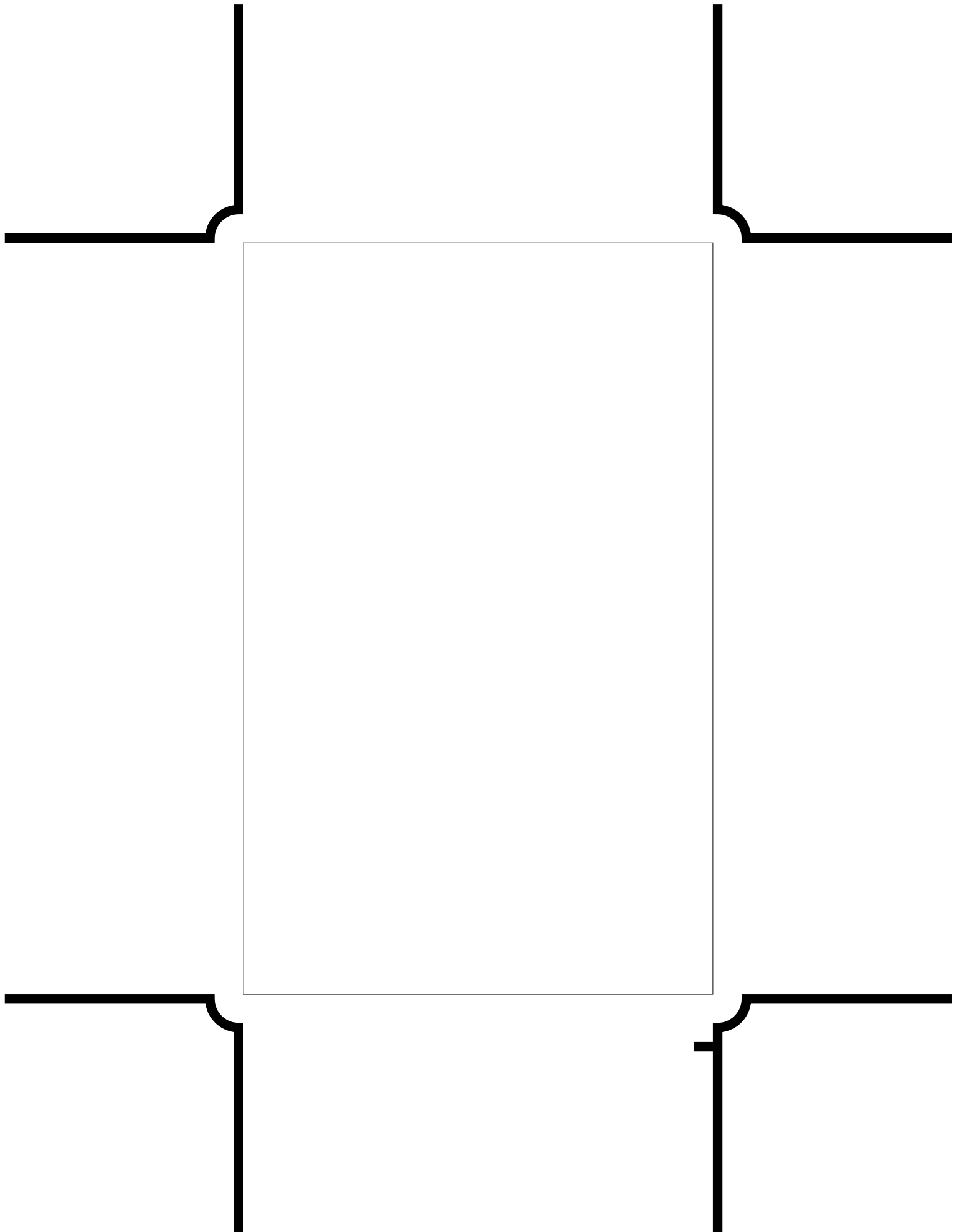




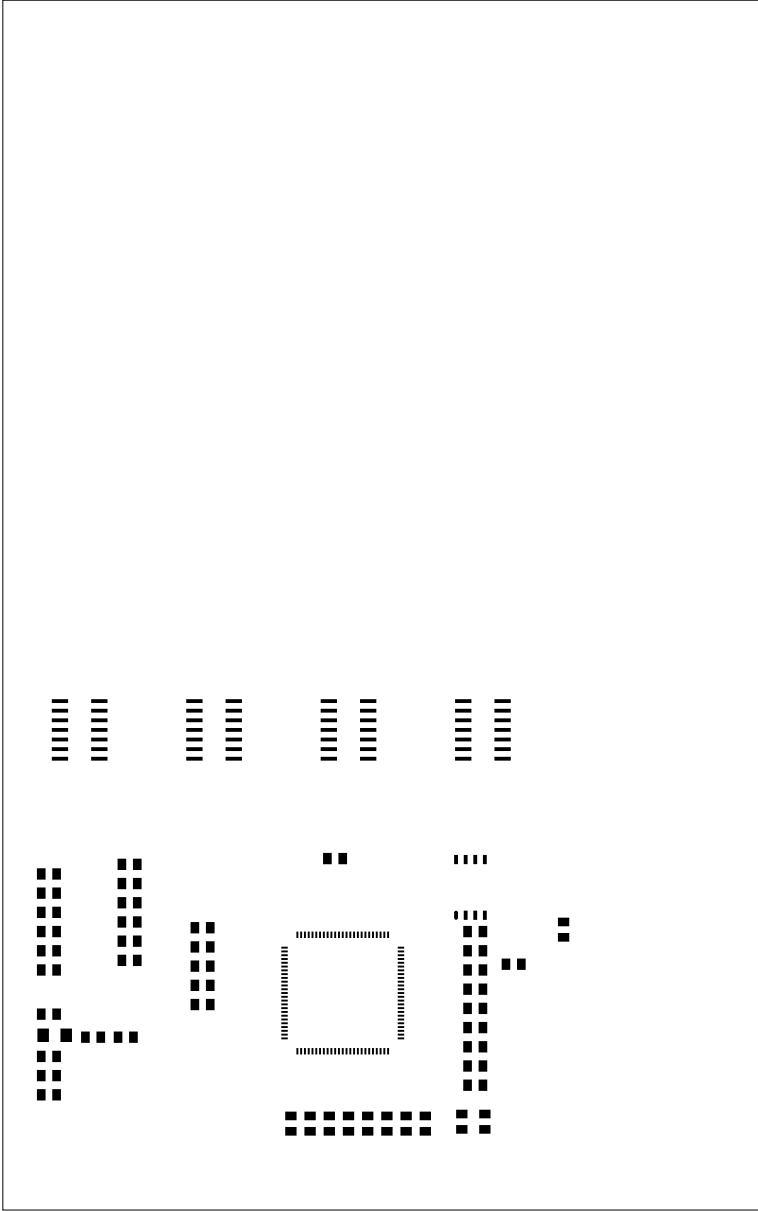


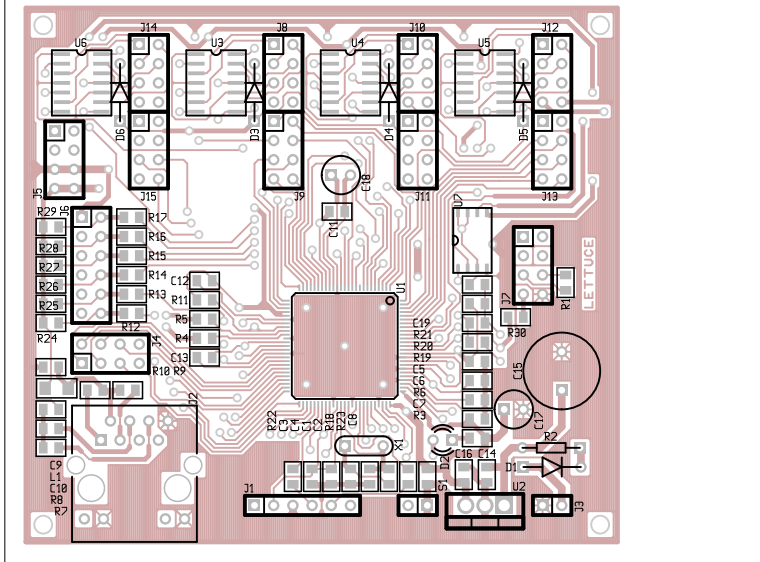


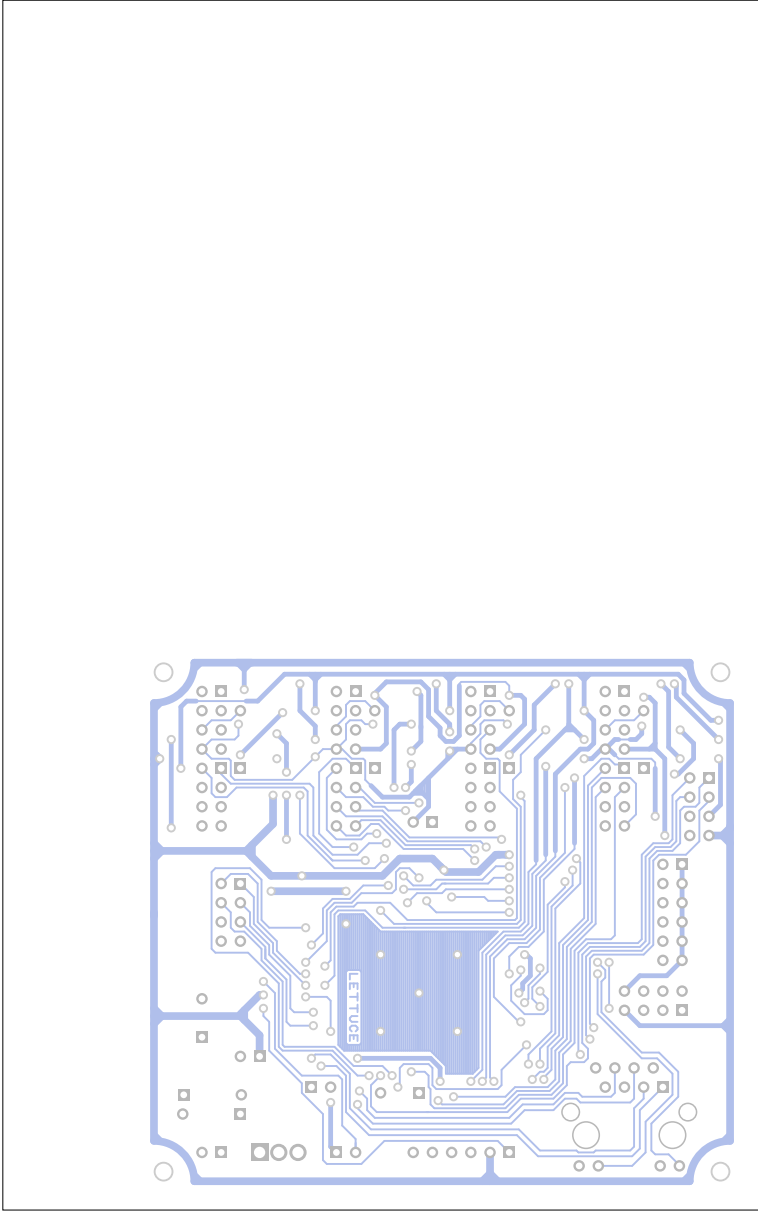












There are 5 different drill sizes used in this layout, 301 holes total

Symbol    Diam. (Inch)    Count    Plated?

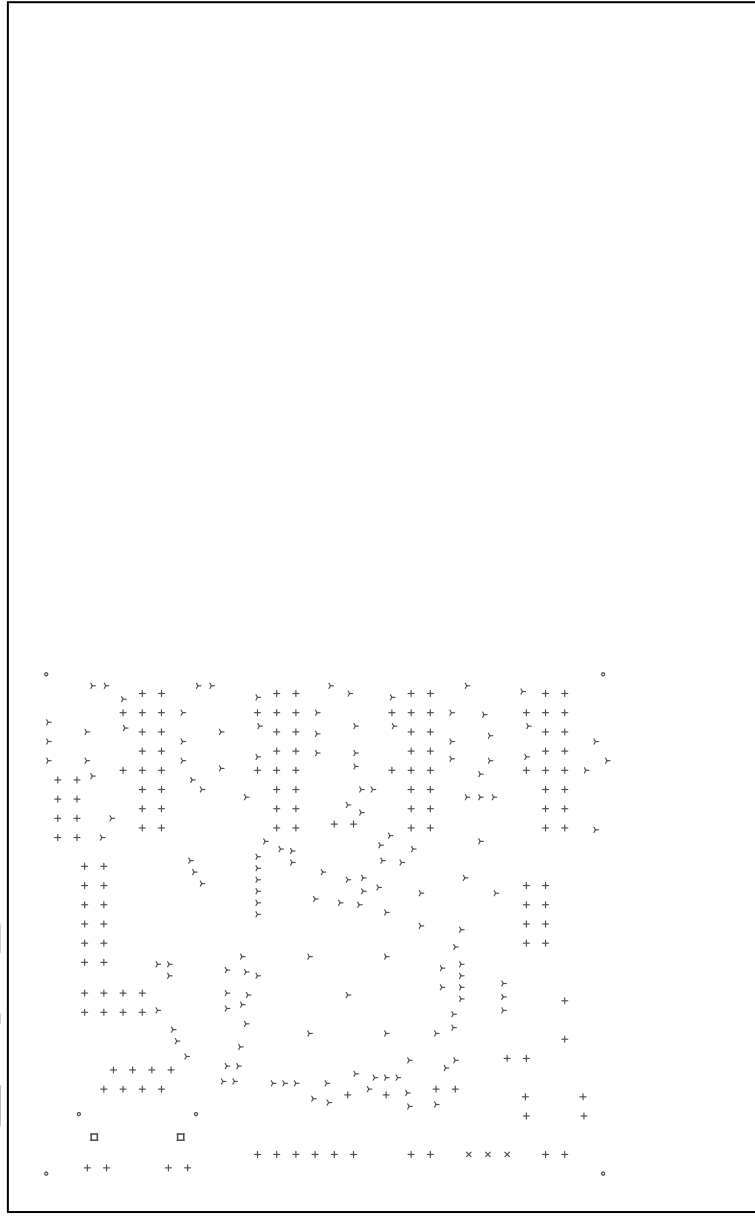
Y	0.028	146	YES
+	0.035	144	YES
x	0.059	3	YES
o	0.083	6	YES
□	0.130	2	YES

Title: Lettuce v1.0 - Fabrication Drawing

Author: Andrew Kladbury

Date: Mon Apr 21 12:07:59 2008 UTC

Maximum Dimensions: 6299 mils wide, 3937 mils high



Board outline is the centerline of this 10 mil rectangle - 0,0 to 6299,3937 mils