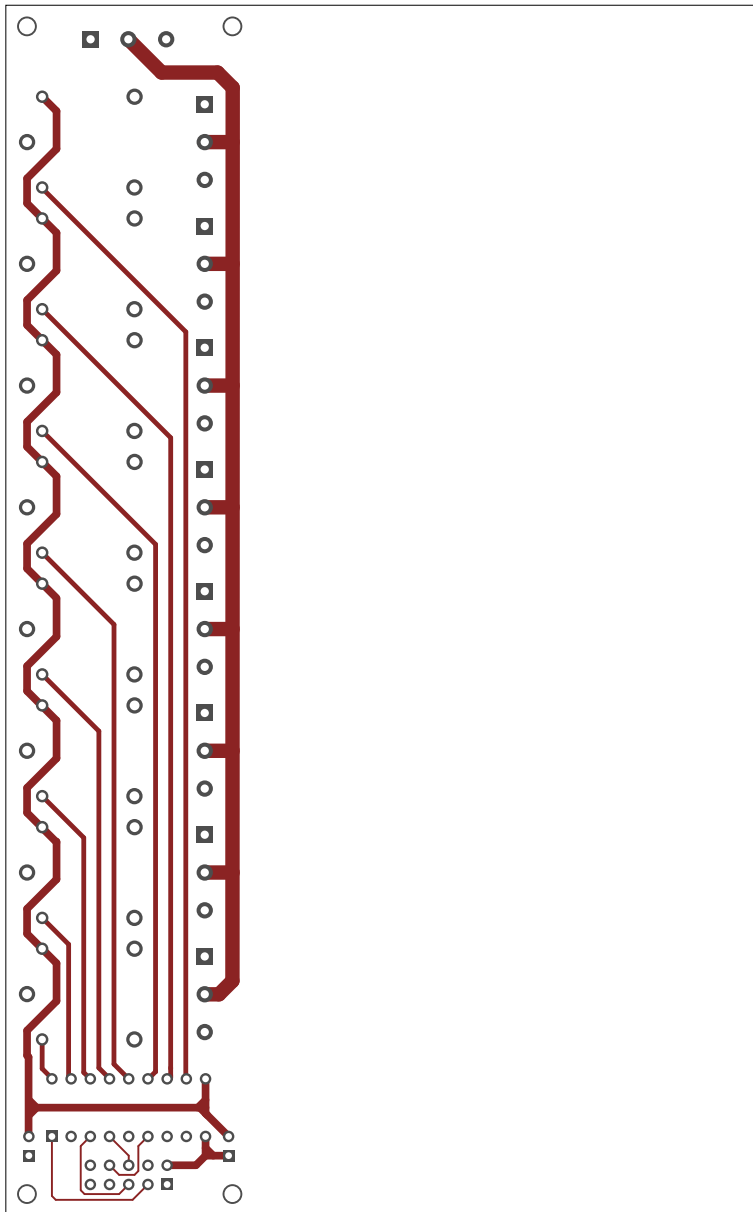
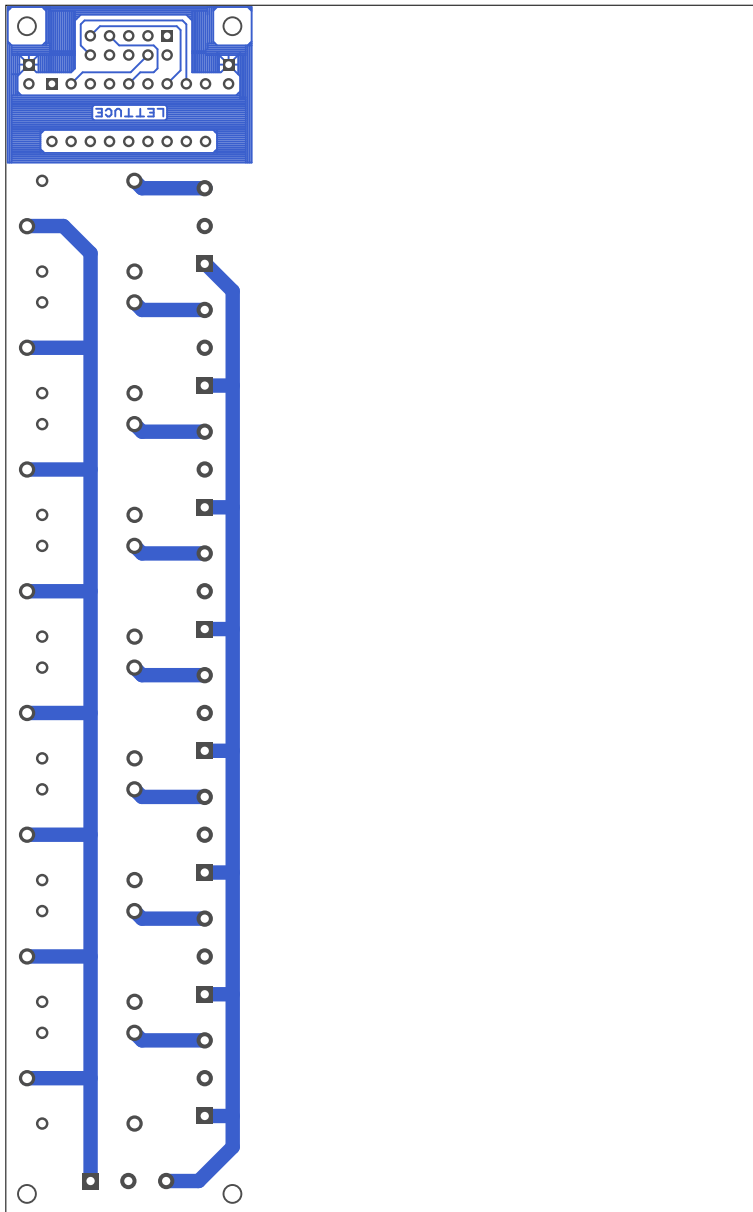
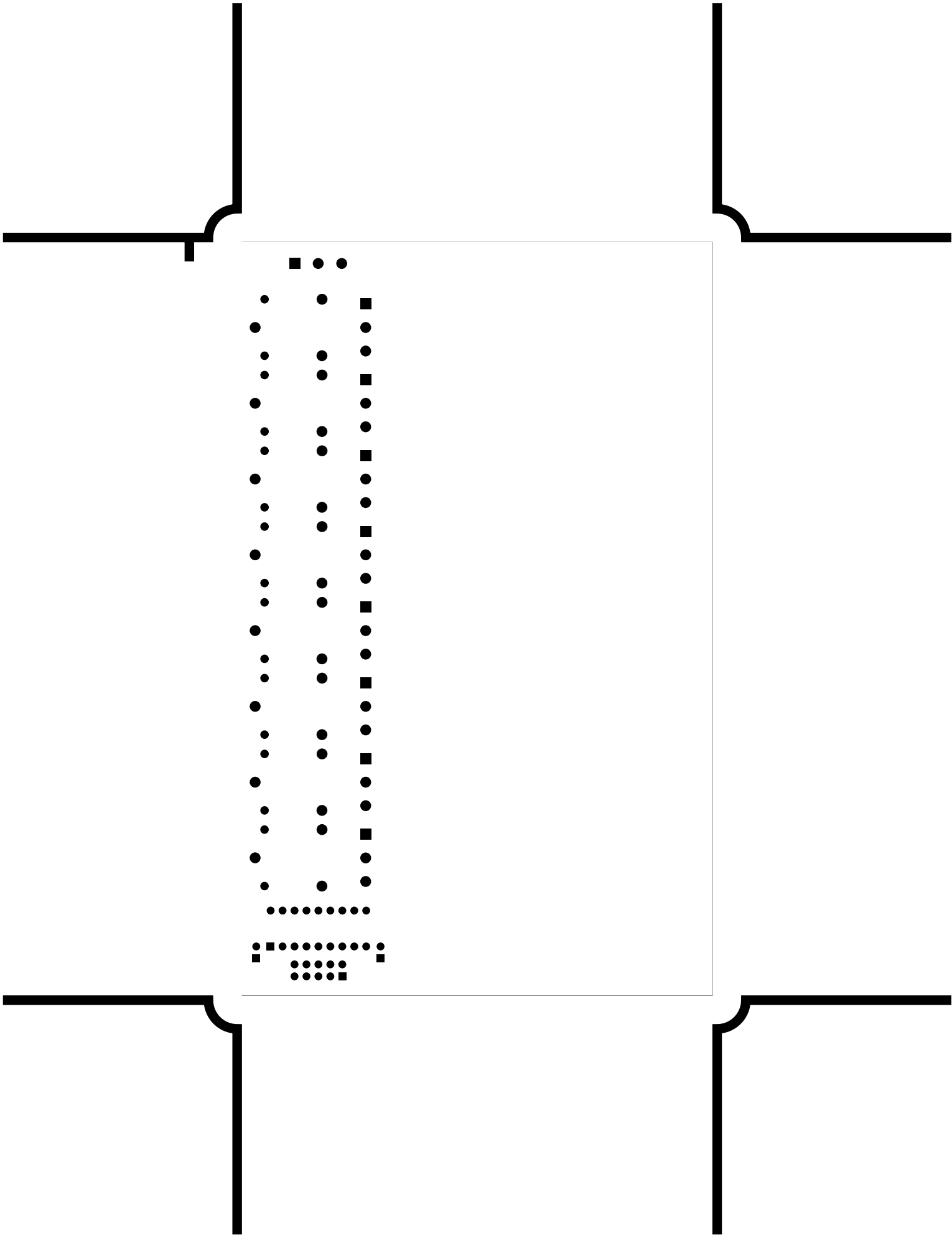
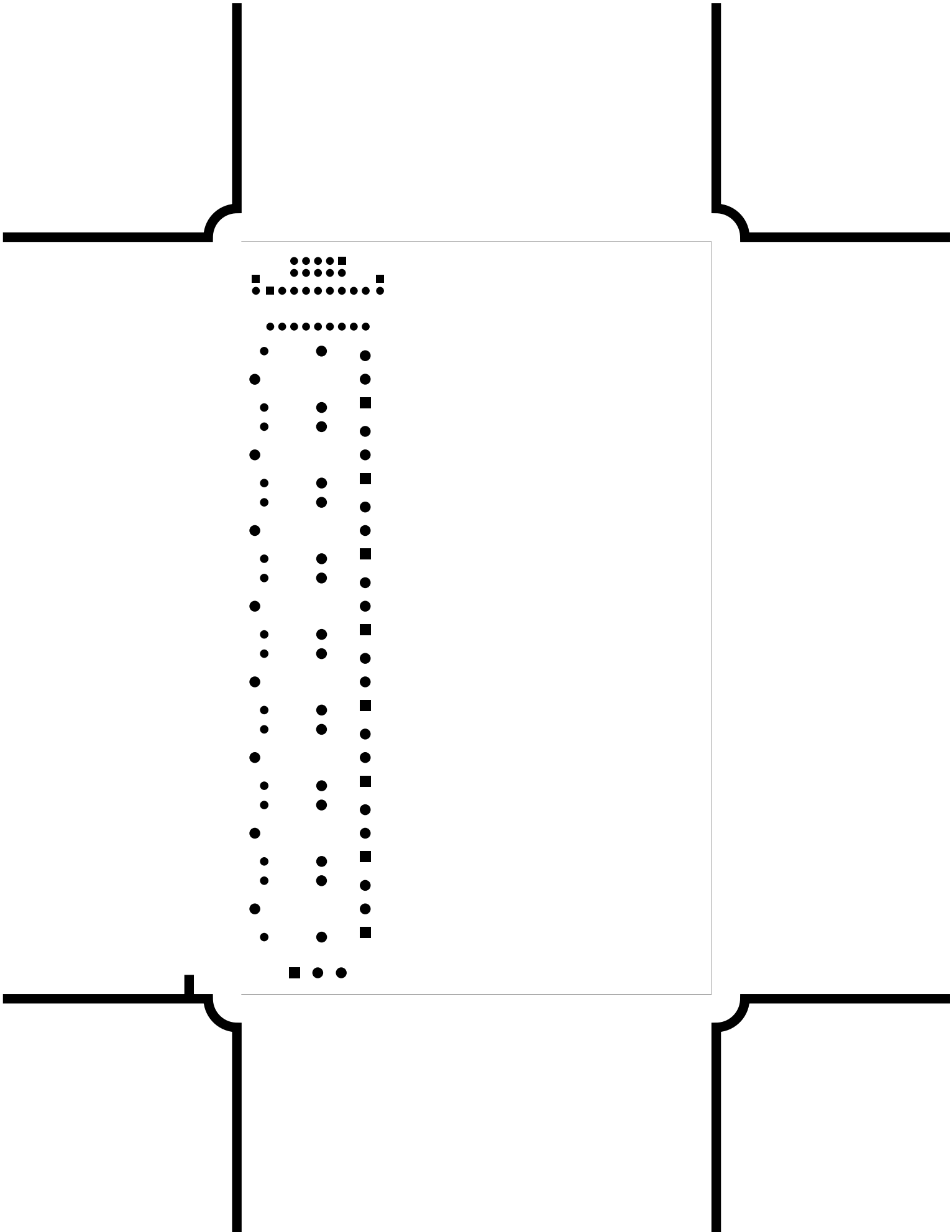


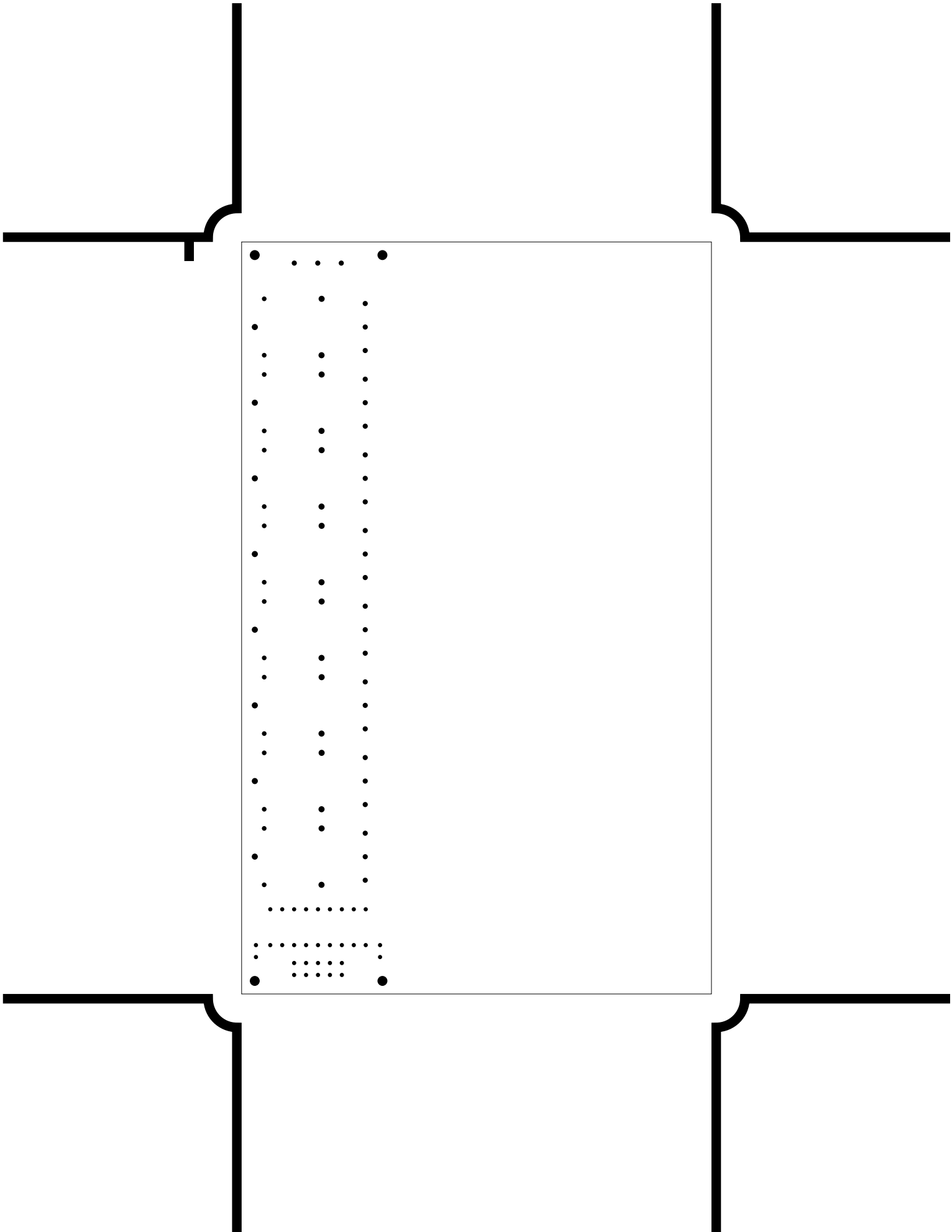
2. component
3. solder
4. componentmask
5. soldermask
6. plated-drill
7. topsilk
8. bottomsilk
9. topassembly
10. bottomassembly
11. fab

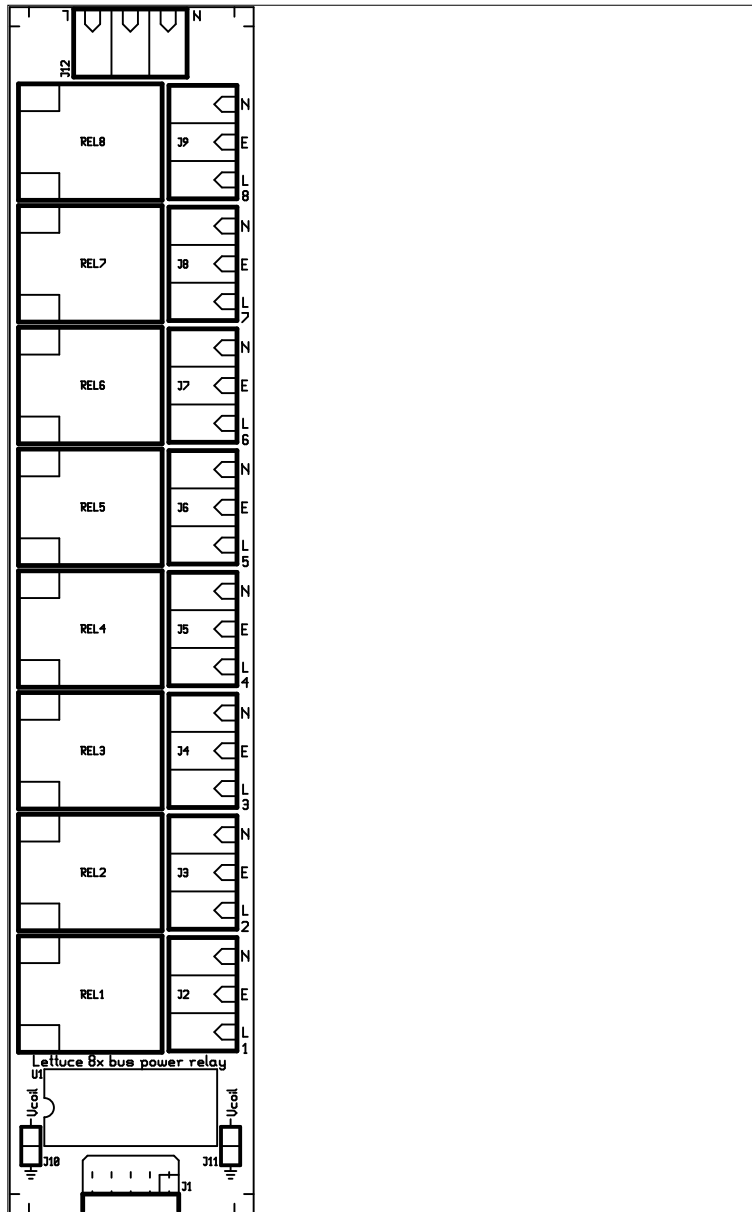


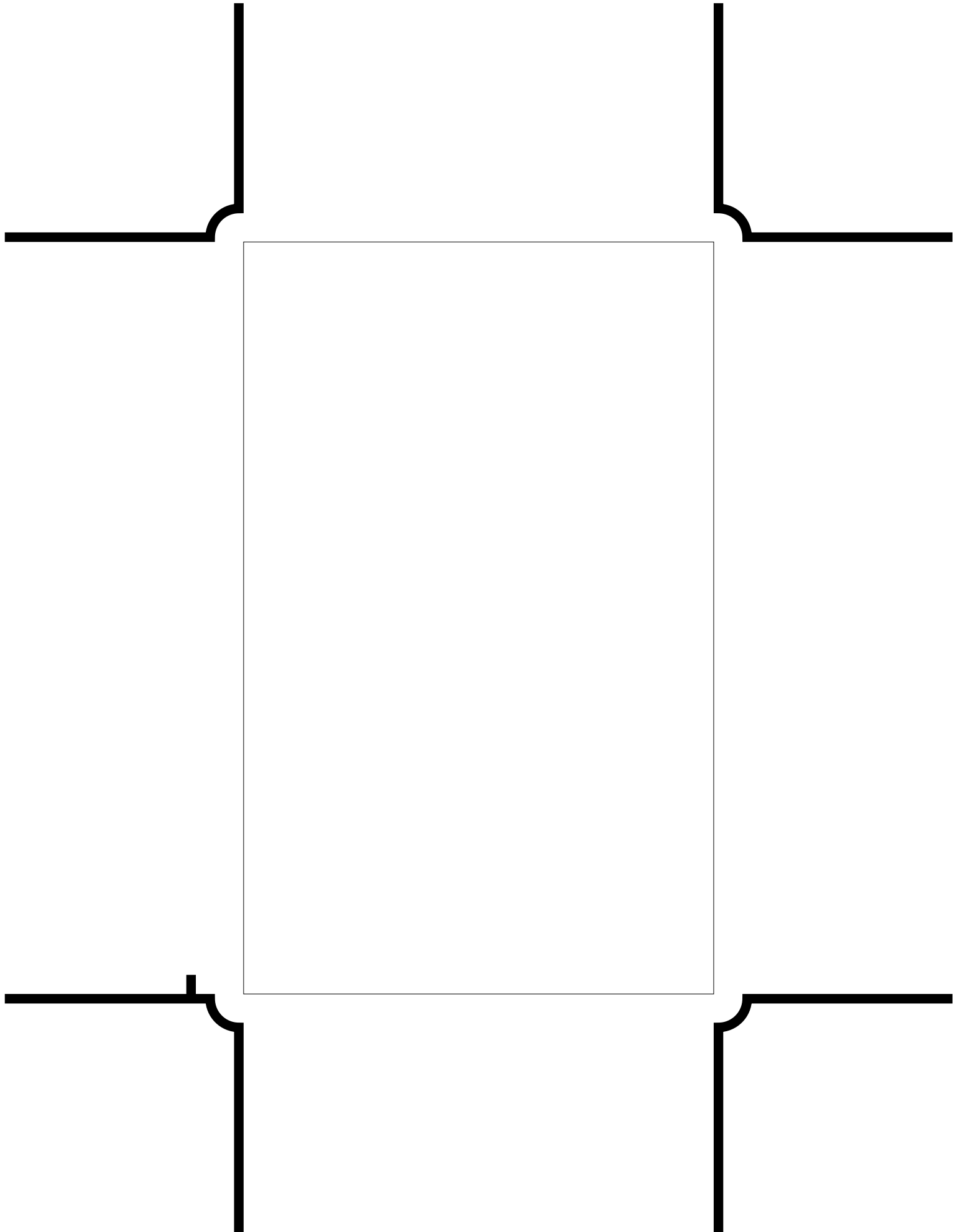




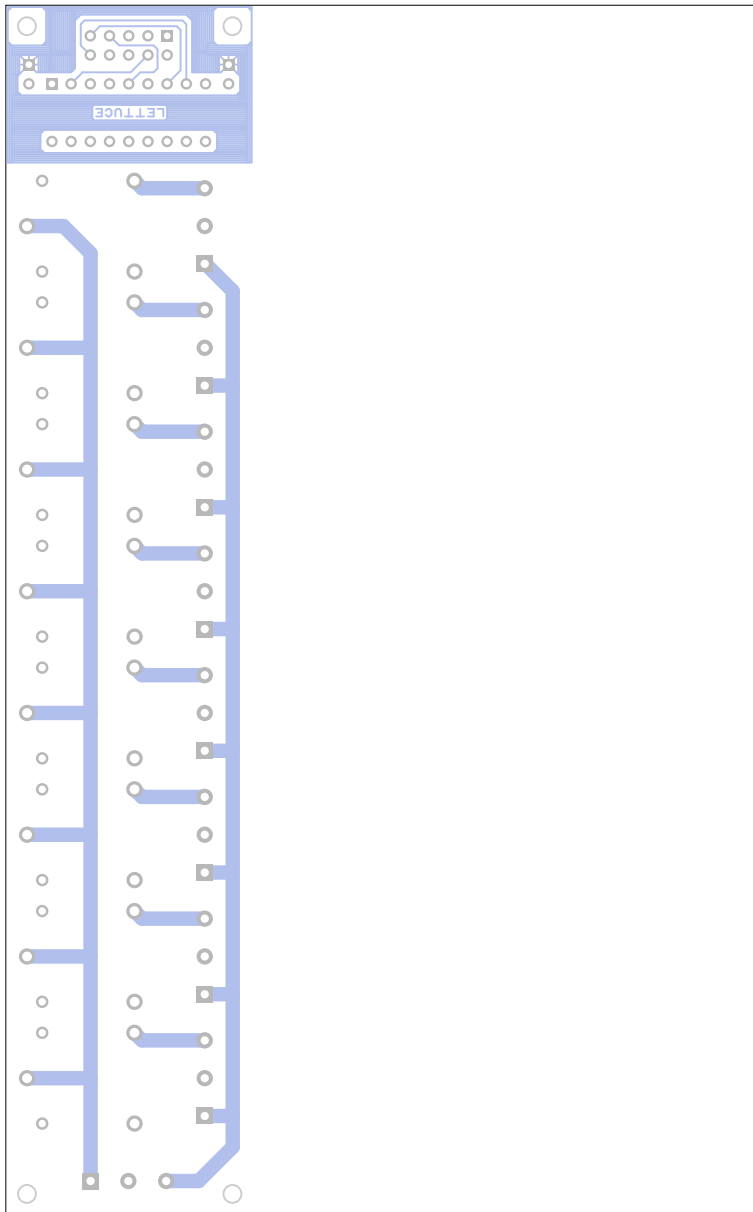












There are 5 different drill sizes used in this layout, 103 holes total

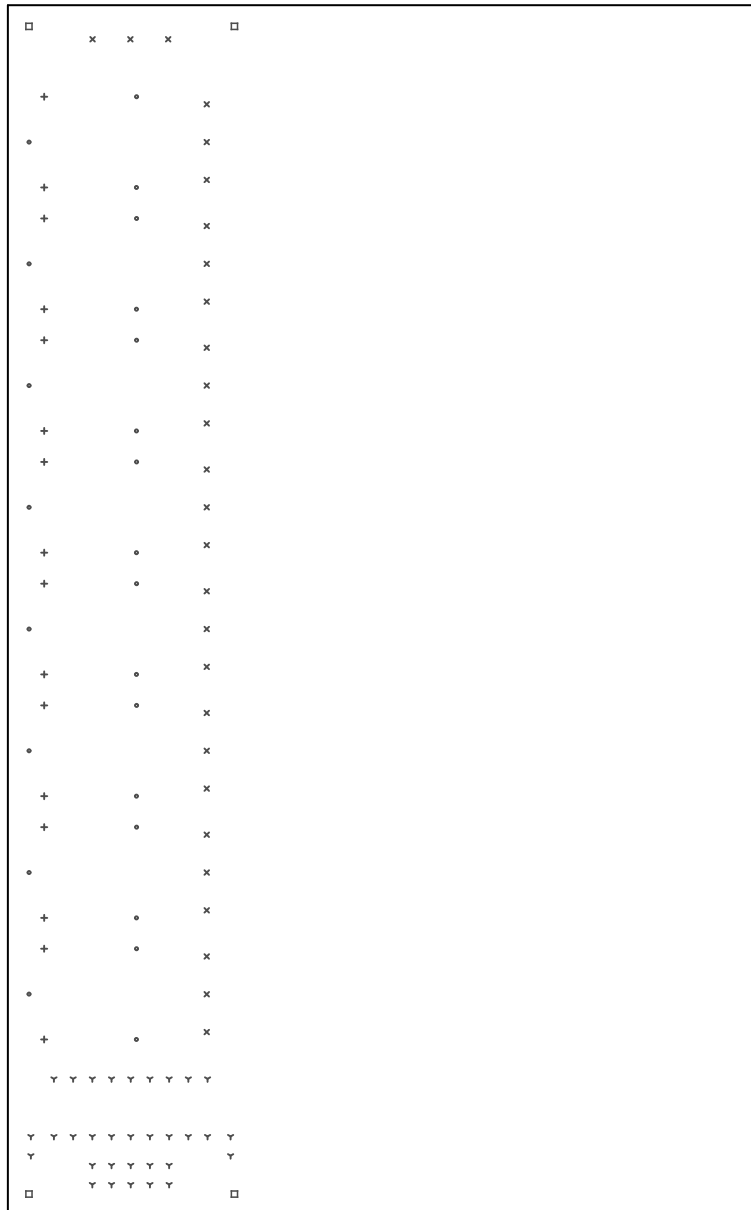
Symbol	Diam. (Inch)	Count	Plated?
γ	<u>0.035</u>	<u>32</u>	<u>YES</u>
+	<u>0.039</u>	<u>16</u>	<u>YES</u>
x	<u>0.043</u>	<u>27</u>	<u>YES</u>
°	<u>0.051</u>	<u>24</u>	<u>YES</u>
□	<u>0.083</u>	<u>4</u>	<u>YES</u>

Title: (unknown) - Fabrication Drawing

Author: Andrew Wedgbury

Date: Mon Apr 21 12:08:51 2008 UTC

Maximum Dimensions: 3937 mls wide, 6299 mls high



Board outline is the centerline of this 10 mil rectangle - 0,0 to 3937,6299 mls